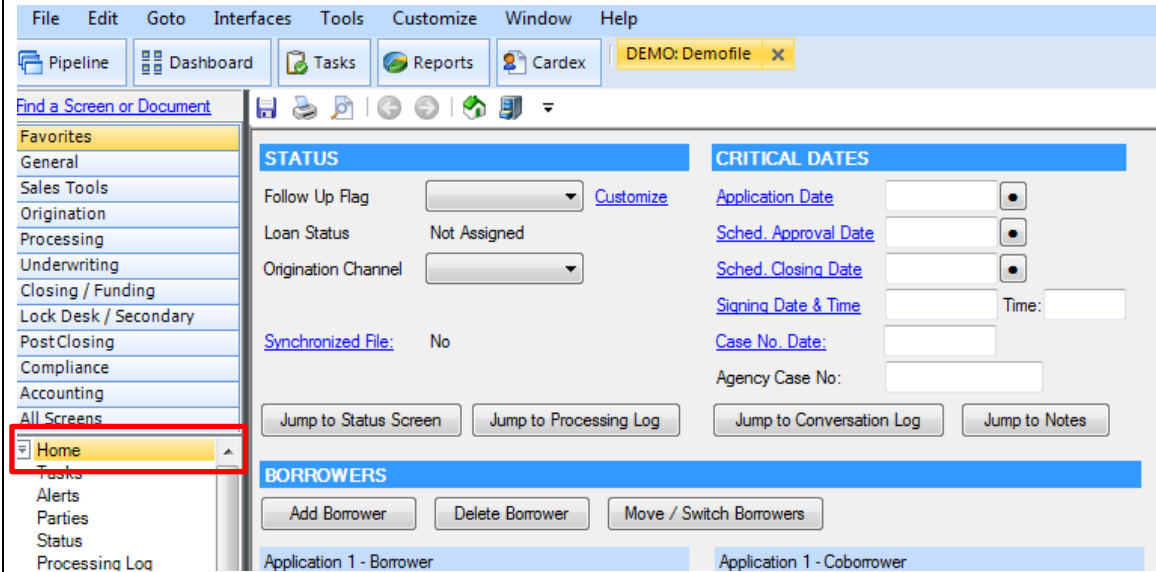


BytePro Direct Rate Quote Guide

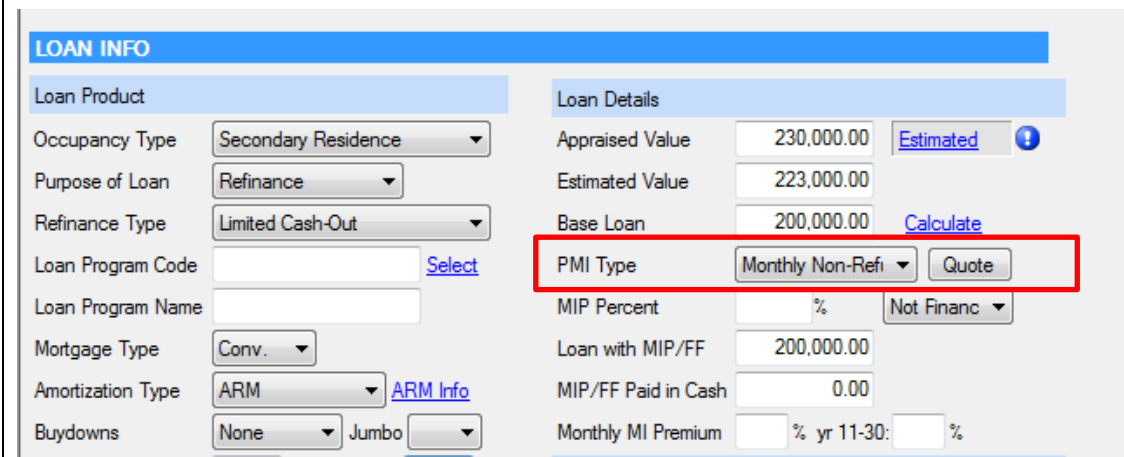


1. Select loan from your Pipeline.
2. Scroll down to **Home** screen, located on the left-hand side of the screen.



The screenshot shows the BytePro software interface. The top menu bar includes File, Edit, Goto, Interfaces, Tools, Customize, Window, and Help. Below the menu bar are buttons for Pipeline, Dashboard, Tasks, Reports, and Cardex. A search bar labeled 'Find a Screen or Document' is present. On the left-hand side, a navigation menu lists various screens, with 'Home' highlighted in a red box. The main content area displays the 'STATUS' section, including fields for Follow Up Flag, Loan Status (Not Assigned), Origination Channel, and Synchronized File. It also features a 'CRITICAL DATES' section with fields for Application Date, Sched. Approval Date, Sched. Closing Date, Signing Date & Time, Case No. Date, and Agency Case No. Below these sections are buttons for 'Jump to Status Screen', 'Jump to Processing Log', 'Jump to Conversation Log', and 'Jump to Notes'. At the bottom, there is a 'BORROWERS' section with buttons for 'Add Borrower', 'Delete Borrower', and 'Move / Switch Borrowers'.

3. In the Loan Details section, select your mortgage insurance premium payment type from the **PMI Type** drop-down box, and then click **Quote**.



The screenshot shows the 'LOAN INFO' section of the BytePro software interface. The left-hand side contains fields for Loan Product, Occupancy Type (Secondary Residence), Purpose of Loan (Refinance), Refinance Type (Limited Cash-Out), Loan Program Code, Loan Program Name, Mortgage Type (Conv.), Amortization Type (ARM), and Buydowns (None). The right-hand side contains the 'Loan Details' section, which includes fields for Appraised Value (230,000.00), Estimated Value (223,000.00), Base Loan (200,000.00), PMI Type (Monthly Non-Refi), MIP Percent (%), Loan with MIP/FF (200,000.00), MIP/FF Paid in Cash (0.00), and Monthly MI Premium (% yr 11-30: %). The 'PMI Type' dropdown menu is highlighted in a red box, and the 'Quote' button next to it is also highlighted in a red box.

- The **MI Quote** screen displays. If the Coverage percentage is not automatically defaulted, enter the appropriate percentage. Then click **Submit**.

MI Quote
✕

Quote Information

The information below is used for the quote only; it is not saved to the loan file unless you accept a quote.

Base LTV 84.00 %

Coverage ⓘ %

PMI Type Monthly Non-Refundable

MI Companies Arch MI

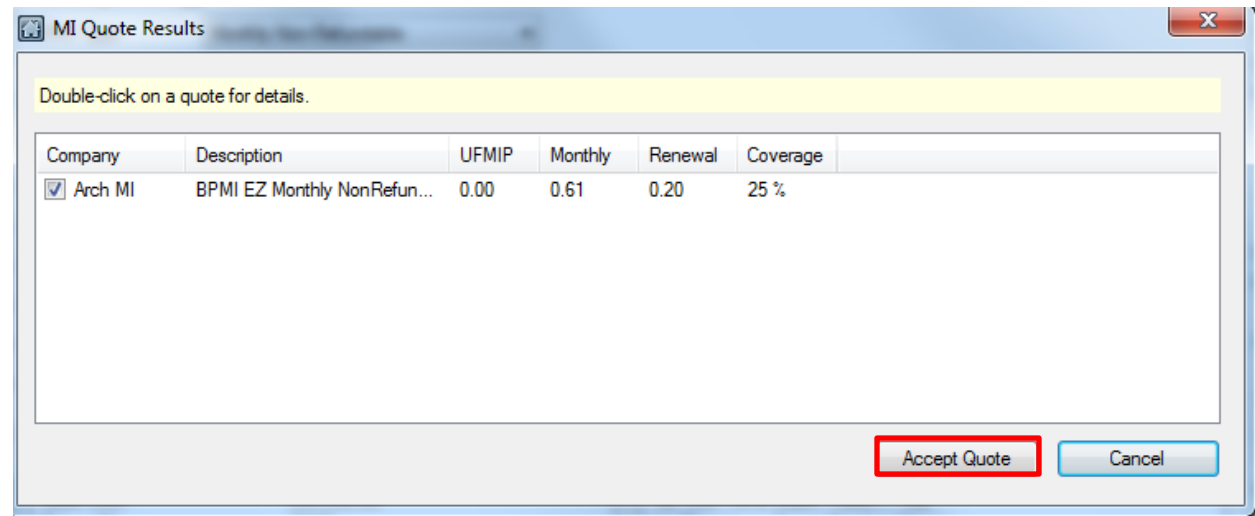
Loan Information

Occupancy Type	Primary Residence
Purpose of Loan	Purchase
Loan Program Code	Fixed Rate
Amortization Type	Fixed
Buydowns	None
Loan Term	360
Base Loan	210,000.00
Base LTV	84.00
CLTV	84.00

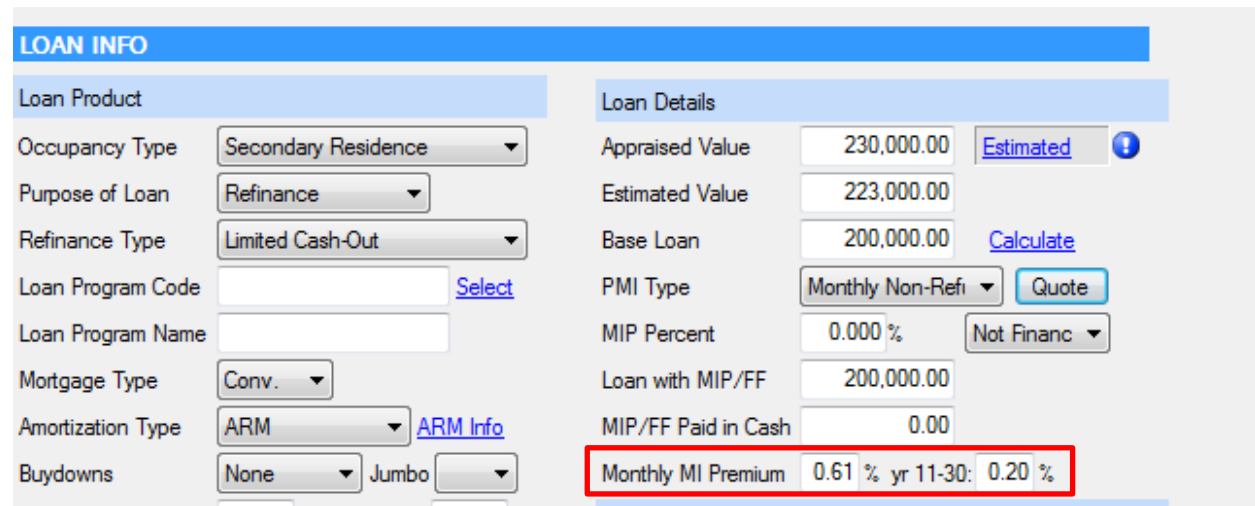
Property State	TX
Property Type	Detached
Number of Units	1
Credit Score	720
Credit Scores: John Homeo...	720 (700, 720, 760)
1st Time Home Buyer: John ...	No
AUS	DU:
Relocation Loan	No

Submit
Close

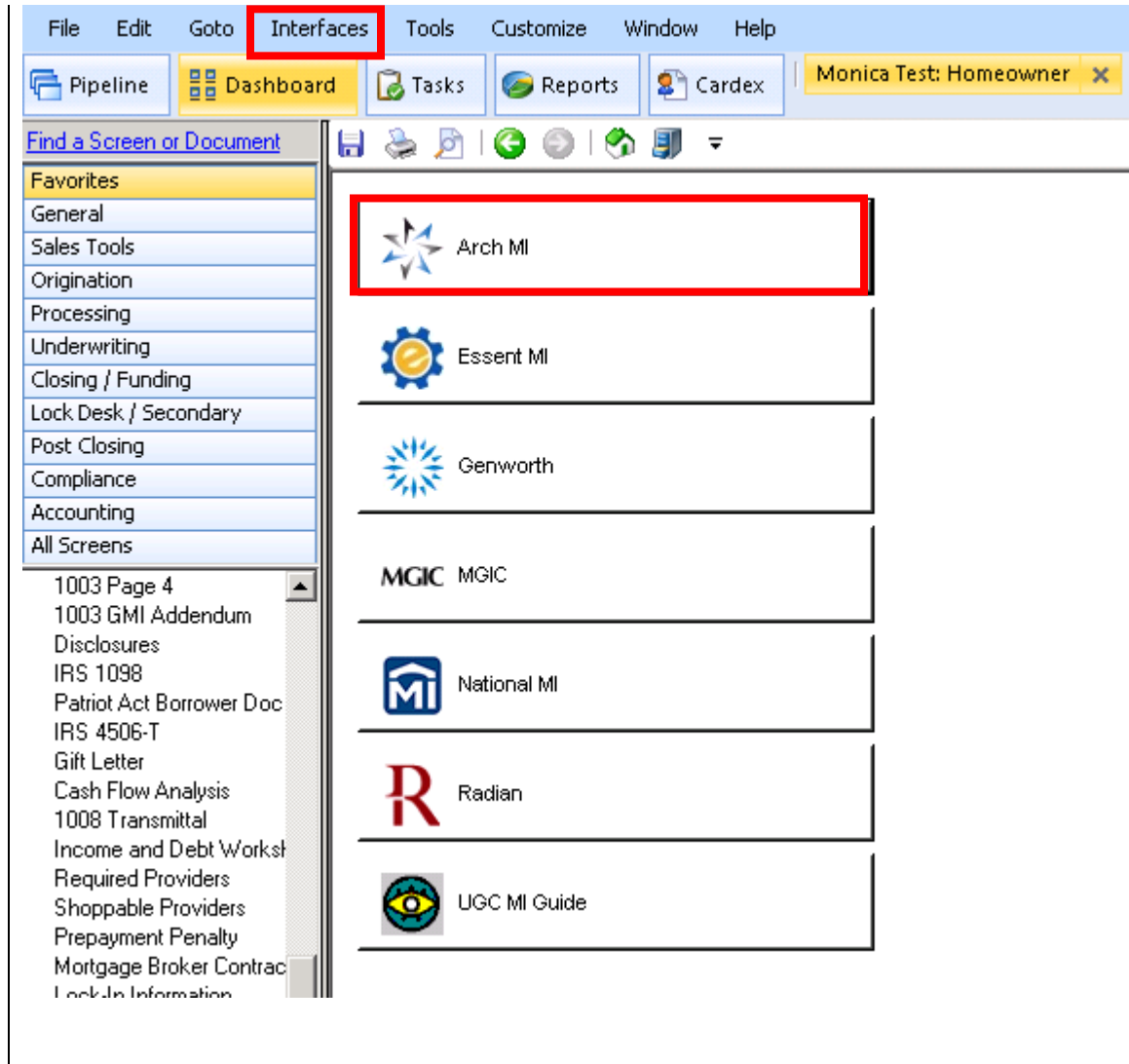
- The **MI Quote Results** screen displays. To import the fees into BytePro, click **Accept Quote**.



- The MI fees should display in the **Loan Details** section of the **Loan Info** screen.



- To view your rate quote PDF, go to **Interfaces**. Select **Mortgage Insurance** and click **Arch MI**.



- The Arch MI screen displays. In the **Documents** section, double-click **MI Rate Quote** to view your rate quote PDF.

Arch MI

Get Quote
Order MI Certificate
Check Status
Open Legacy Interface

Provider
[Arch MI Web Site - Upload Documents](#)

[Defaults](#)

Rate Quote ID:

Certificate No.:

Coverage %: %

MI Underwriting Method:

Special Program Code:

MI Company:

Purchase Price:

Base Loan: [Calculate](#)

PMI Type:

MIP Percent: %

Loan with MIP/FF:

MIP/FF Paid in Cash:

Monthly MI Premium: % yr 11-30; %

Monthly MI Payment:

MI Prem Pd in Adv: % \$

Months in Advance:

Documents (double-click on a document to view it)

Date	Name
5/11/20 7:06:10 PM	MI Rate Quote
5/11/20 6:43:58 PM	MI Rate Quote
5/11/20 6:43:25 PM	MI Rate Quote

Status Messages (double-click to view long messages)

Date	Message
5/11/20 7:06:10 PM	Rate quotes generated are estimates based on the information you provided, considering
5/11/20 7:06:10 PM	INFORMATION: Your request has been processed.