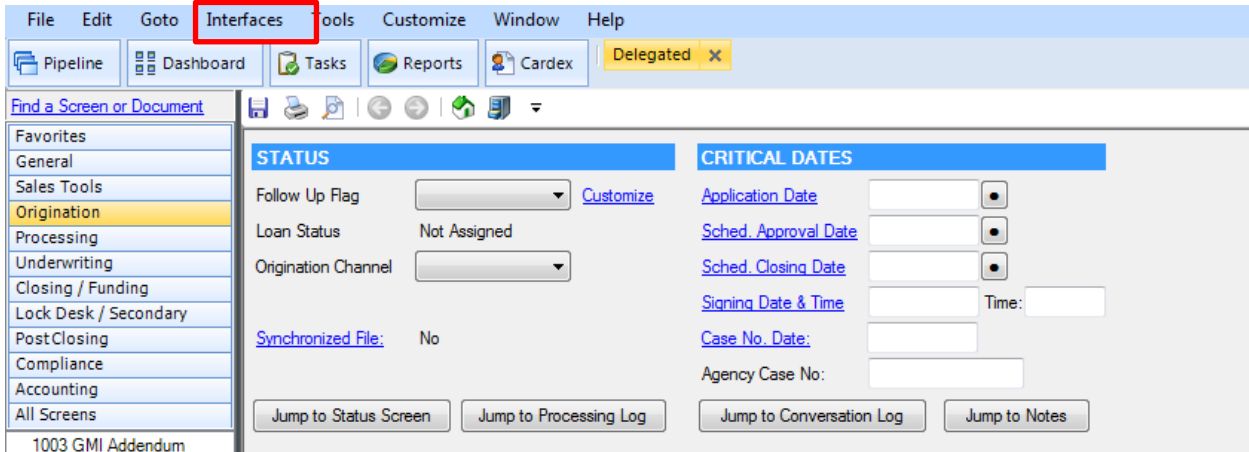


BytePro Delegated Underwriting Guide

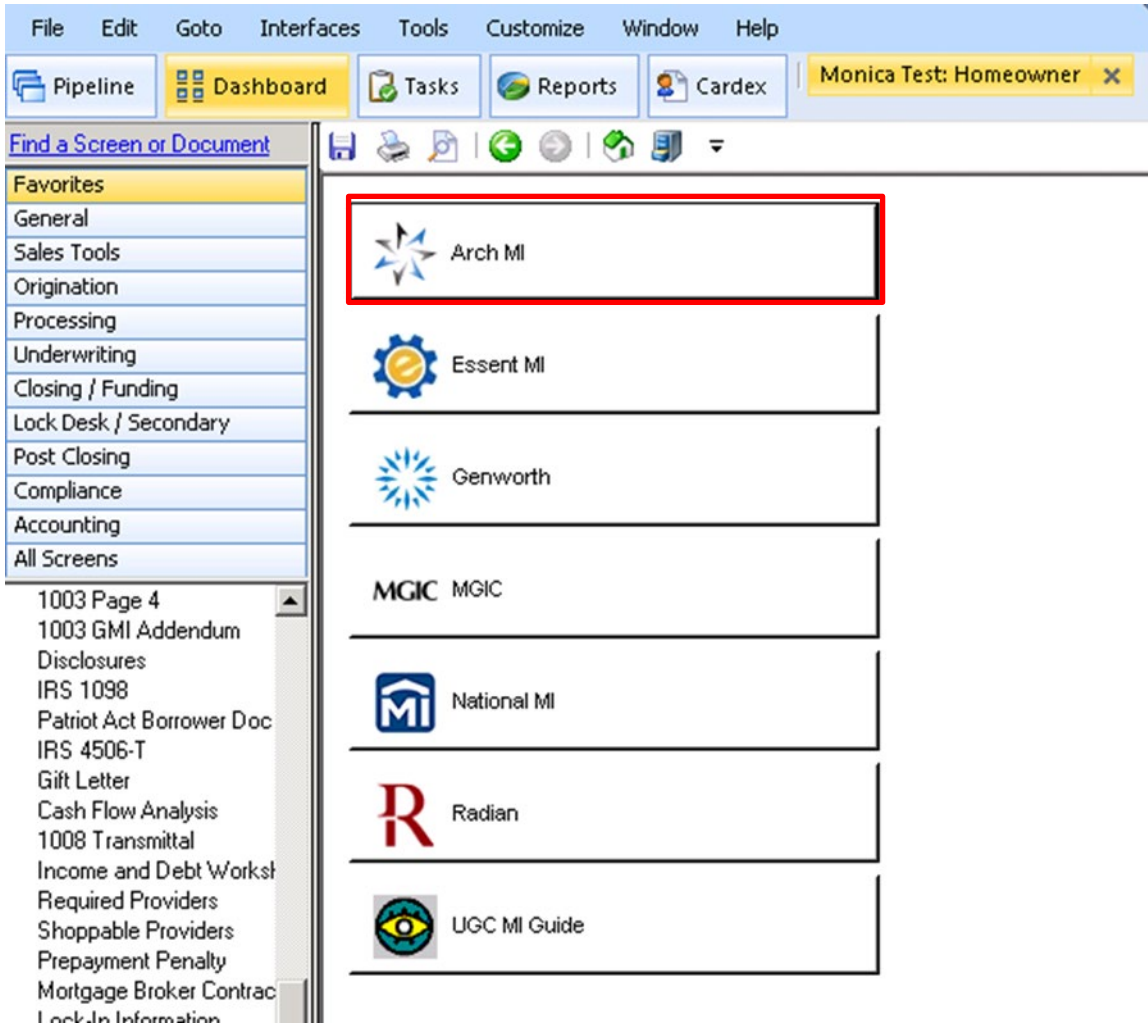


Request Rates from BytePro

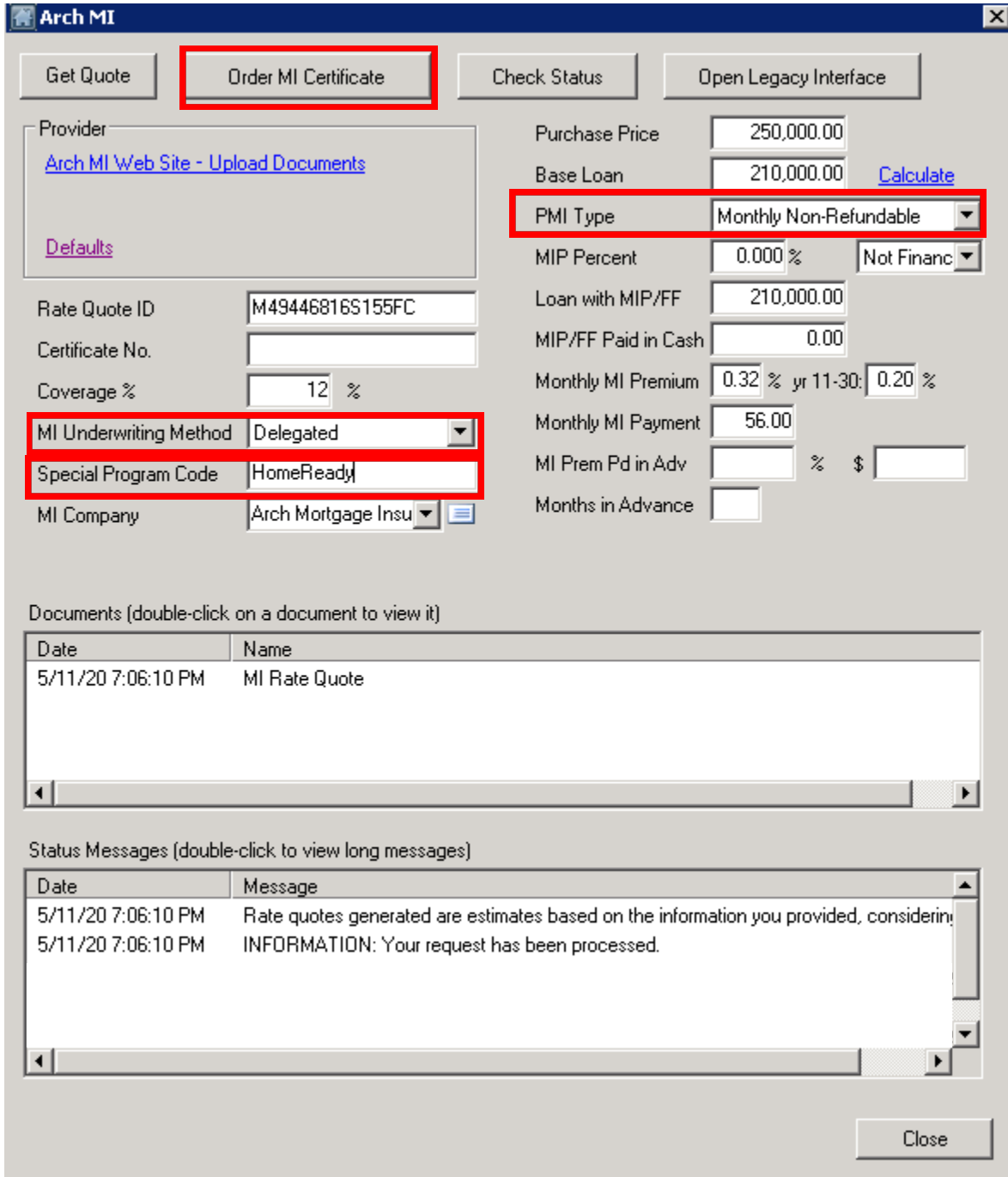
1. Go to **Pipeline** and select Loan from your **Pipeline**.
2. Select **Interfaces, Mortgage Insurance**.



3. Select **Arch MI**. The Arch MI screen displays.



4. Select **Delegated** in the **MI Underwriting Method** drop-down box. Enter applicable Loan Program code in the **Special Program Code** box. Select the appropriate Premium Plan in **PMI Type** drop-down box. Click **Order MI Certificate**.



Arch MI

Get Quote | **Order MI Certificate** | Check Status | Open Legacy Interface

Provider: [Arch MI Web Site - Upload Documents](#)

Defaults

Rate Quote ID: M49446816S155FC

Certificate No.:

Coverage %: 12 %

MI Underwriting Method: Delegated

Special Program Code: HomeReady

MI Company: Arch Mortgage Insu

Purchase Price: 250,000.00

Base Loan: 210,000.00 [Calculate](#)

PMI Type: Monthly Non-Refundable

MIP Percent: 0.000 % [Not Financ](#)

Loan with MIP/FF: 210,000.00

MIP/FF Paid in Cash: 0.00

Monthly MI Premium: 0.32 % yr 11-30: 0.20 %

Monthly MI Payment: 56.00

MI Prem Pd in Adv: % \$

Months in Advance:

Documents (double-click on a document to view it)

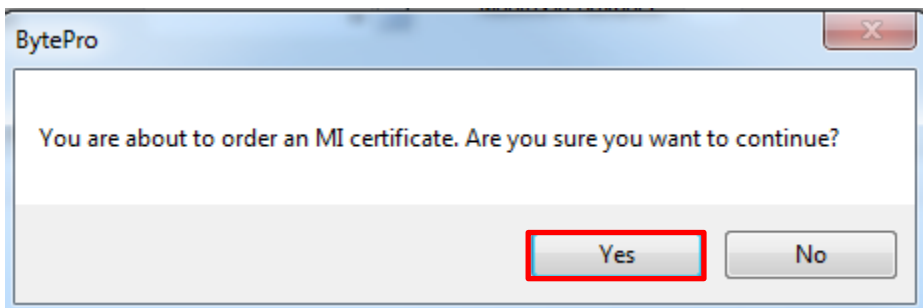
Date	Name
5/11/20 7:06:10 PM	MI Rate Quote

Status Messages (double-click to view long messages)

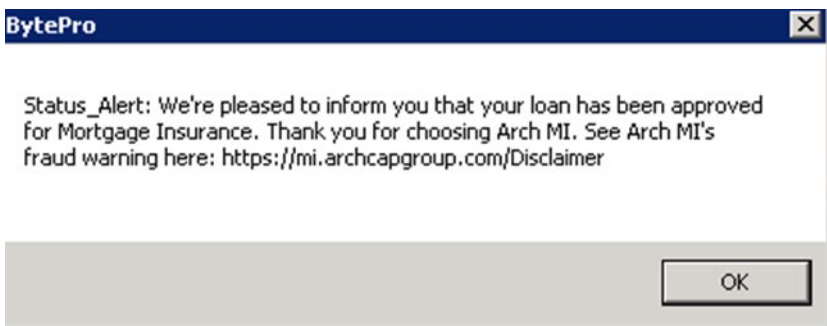
Date	Message
5/11/20 7:06:10 PM	Rate quotes generated are estimates based on the information you provided, considerin
5/11/20 7:06:10 PM	INFORMATION: Your request has been processed.

Close

5. Confirmation message displays. Select **Yes** to order Delegated MI.



6. A message displays indicating your MI request has been approved for Mortgage Insurance. Click **OK**.



- The Arch MI screen displays. In the **Documents** section, double-click the **MI Certificate** to view your MI Certificate PDF. The MI Certificate is also stored in your **Stored Documents** folder. MI rates are automatically imported into BytePro.

Arch MI
✕

Get Quote
Order MI Certificate
Check Status
Open Legacy Interface

Provider
[Arch MI Web Site - Upload Documents](#)

[Defaults](#)

Rate Quote ID:
 Certificate No.:
 Coverage %: %
 MI Underwriting Method:
 Special Program Code:
 MI Company:

Purchase Price:
 Base Loan: [Calculate](#)
 PMI Type:
 MIP Percent: %
 Loan with MIP/FF:
 MIP/FF Paid in Cash:

Monthly MI Premium: % yr 11-30: %
 Monthly MI Payment:
 MI Prem Pd in Adv: % \$
 Months in Advance:

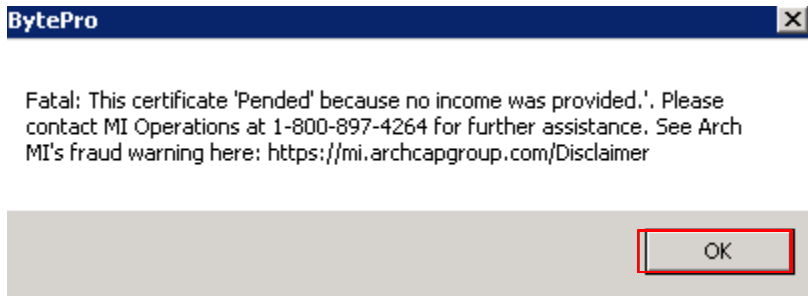
Documents (double-click on a document to view it)

Date	Name
5/11/20 8:15:01 PM	MI Certificate
5/11/20 8:14:52 PM	MI Rate Quote

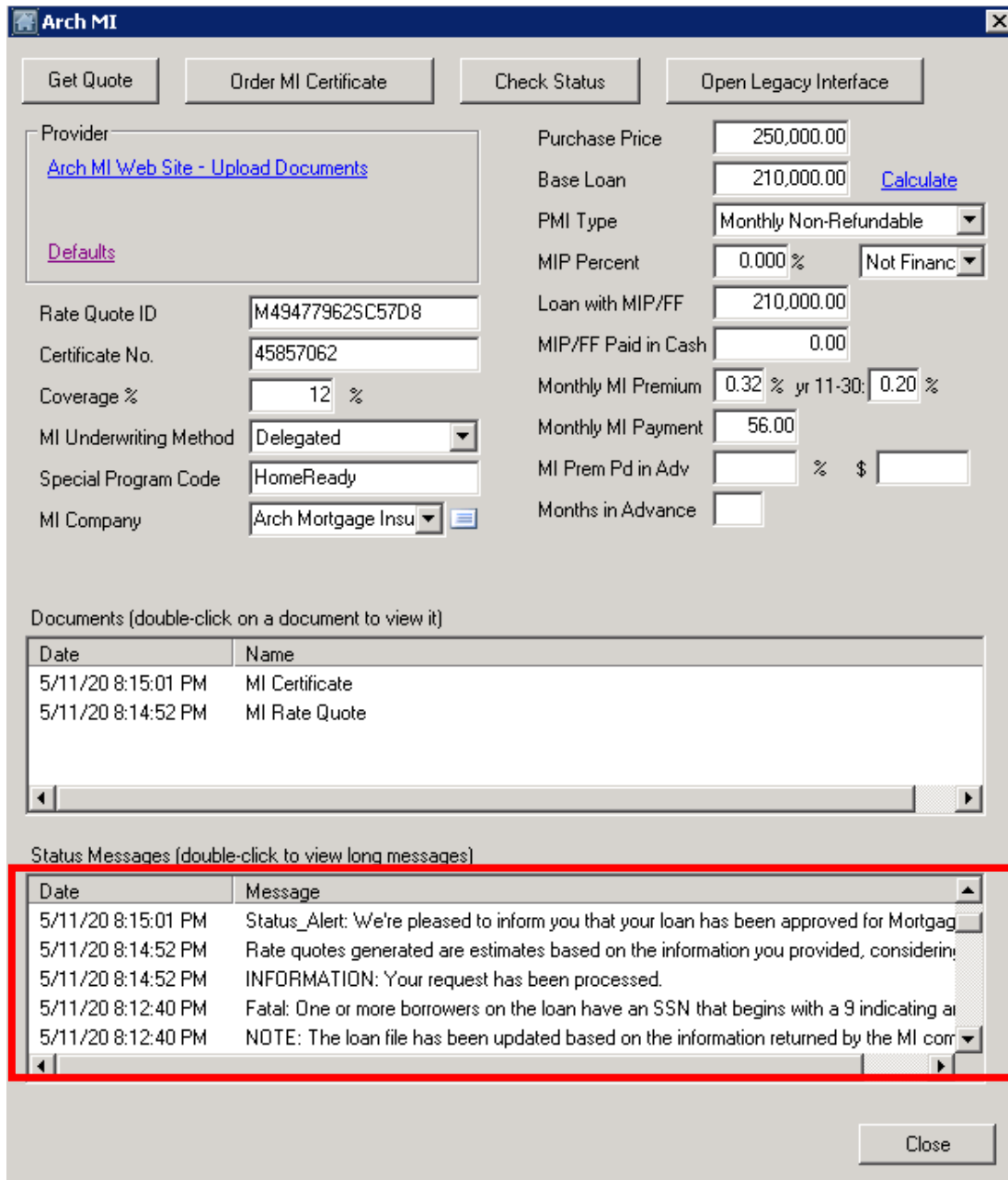
Status Messages (double-click to view long messages)

Date	Message
5/11/20 8:15:01 PM	Status_Alert: We're pleased to inform you that your loan has been approved for Mortgag
5/11/20 8:14:52 PM	Rate quotes generated are estimates based on the information you provided, considerin
5/11/20 8:14:52 PM	INFORMATION: Your request has been processed.

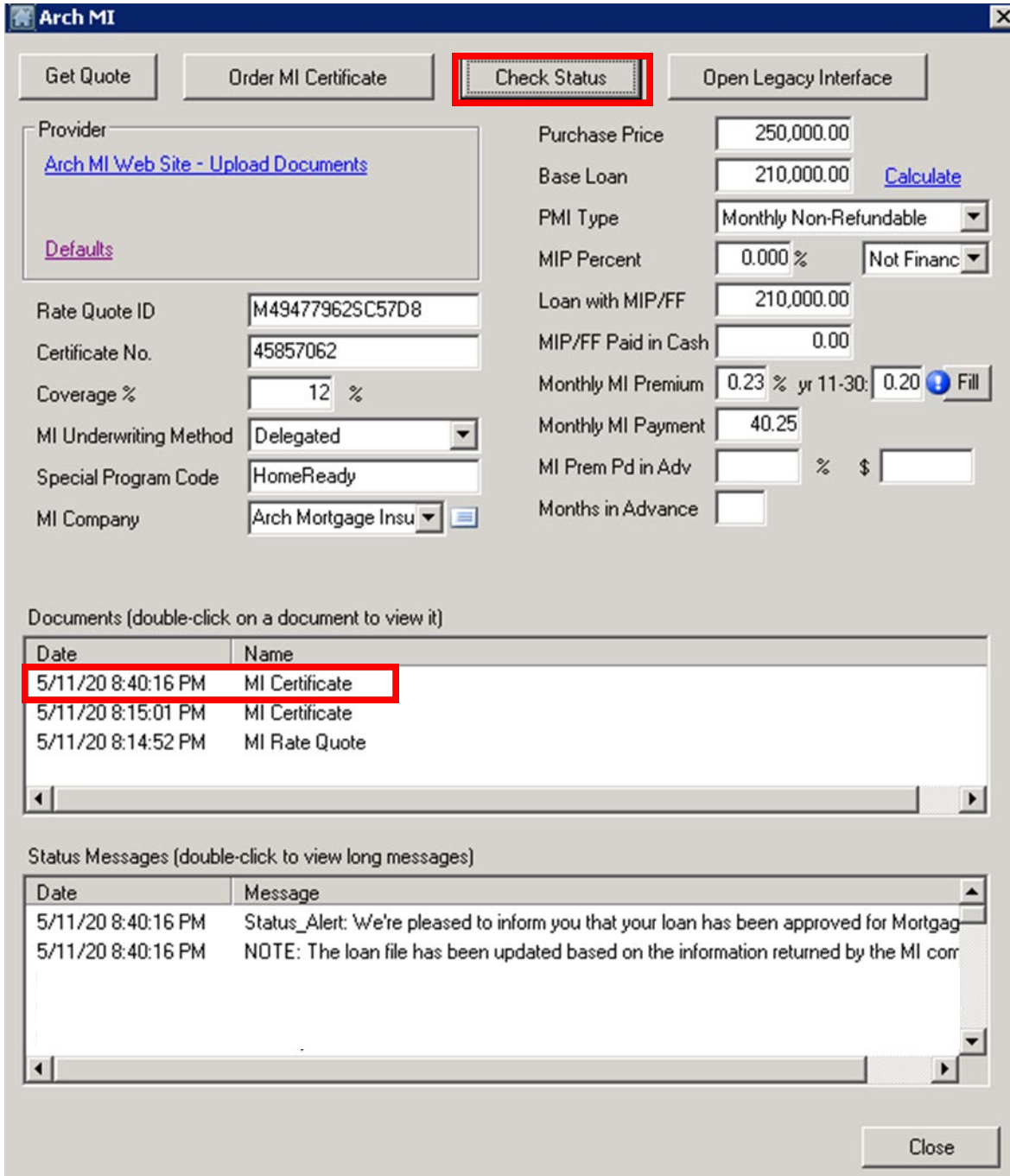
- If your loan suspends, an error message displays. Click **OK**.



- All messages display in the **Status Messages** section.



- Once your loan is approved, select **Check Status**. A Status Alert will display that the loan has been approved. In the **Documents** section, double-click the **MI Certificate** to view your MI Certificate PDF. MI Rates automatically import into BytePro.



Arch MI

Provider: [Arch MI Web Site - Upload Documents](#)
[Defaults](#)

Rate Quote ID	M494779625C57D8	Purchase Price	250,000.00
Certificate No.	45857062	Base Loan	210,000.00 Calculate
Coverage %	12 %	PMI Type	Monthly Non-Refundable
MI Underwriting Method	Delegated	MIP Percent	0.000 % <input type="button" value="Not Financ"/>
Special Program Code	HomeReady	Loan with MIP/FF	210,000.00
MI Company	Arch Mortgage Insu	MIP/FF Paid in Cash	0.00
		Monthly MI Premium	0.23 % yr 11-30: 0.20 <input type="button" value="Fill"/>
		Monthly MI Payment	40.25
		MI Prem Pd in Adv	% \$
		Months in Advance	

Documents (double-click on a document to view it)

Date	Name
5/11/20 8:40:16 PM	MI Certificate
5/11/20 8:15:01 PM	MI Certificate
5/11/20 8:14:52 PM	MI Rate Quote

Status Messages (double-click to view long messages)

Date	Message
5/11/20 8:40:16 PM	Status_Alert: We're pleased to inform you that your loan has been approved for Mortgag
5/11/20 8:40:16 PM	NOTE: The loan file has been updated based on the information returned by the MI corr

